



ACTIVITY KIT

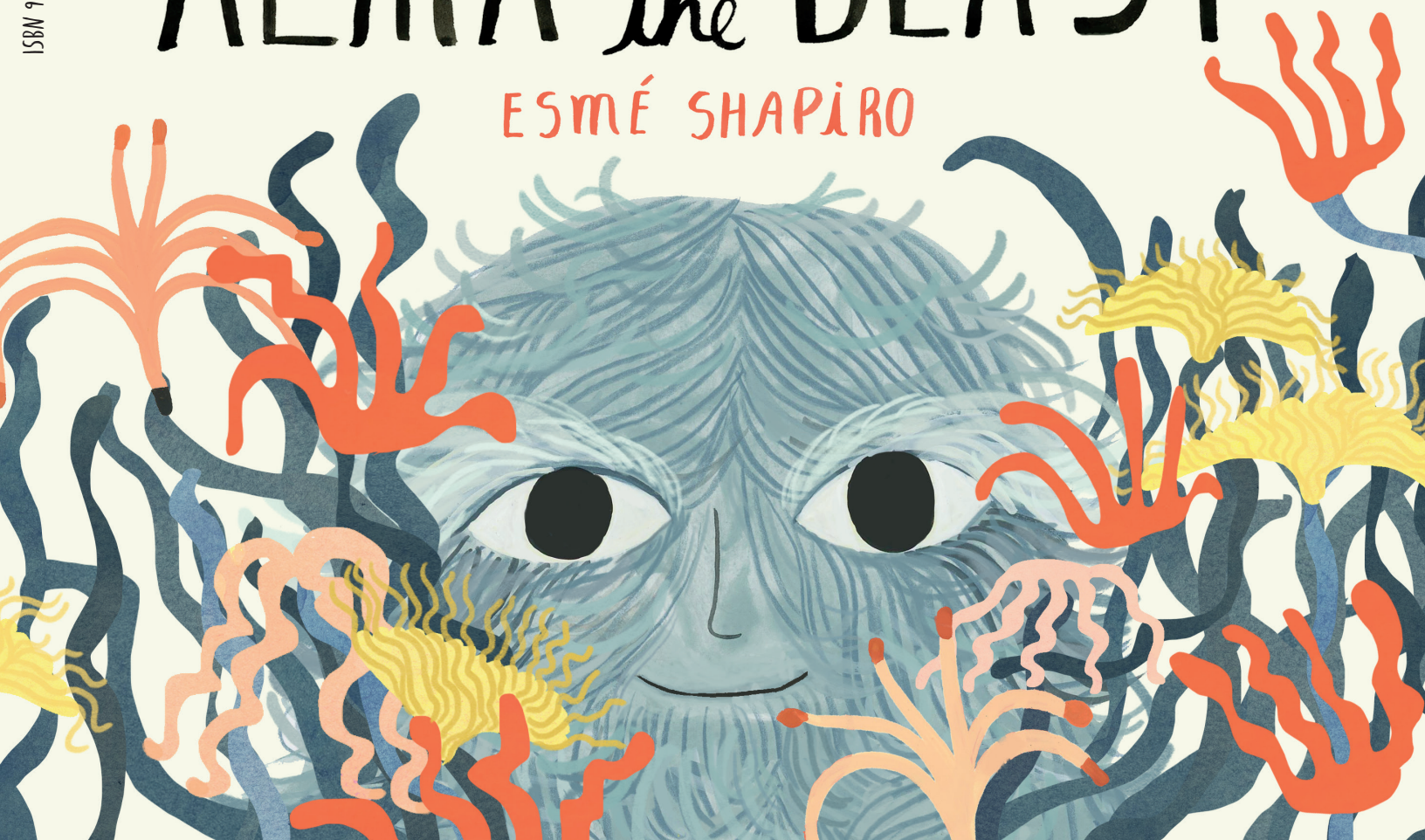


tundra

www.penguinrandomhouse.ca

ALMA *and the* BEAST

ESMÉ SHAPIRO



ISBN 9780735263963

ABOUT THE BOOK

Alma lives happily in her hairy world, where she can braid the trees, comb the grass, pet the roof and feed her plumpooshkie butterfly. Until one day . . . a hairless, button-nosed beast appears in the garden! At first Alma is scared, but when she realizes the beast is lost and misses her hairless home, Alma offers to help her find her way back. As the two take a fantastical journey through the Redheaded Woods and the Bearded-Mushroom Glen to the beast's bald abode, they discover that they are much more alike than different.

This quirky and charming story about friendship, empathy and perspective invites readers into a surreal, fantastical world that evokes *Alice in Wonderland*, *Where the Wild Things Are* and *The Lorax*.

Ages 3-7 • Preschool - Grade 2 • Fountas/Pinnell Reading Level: M

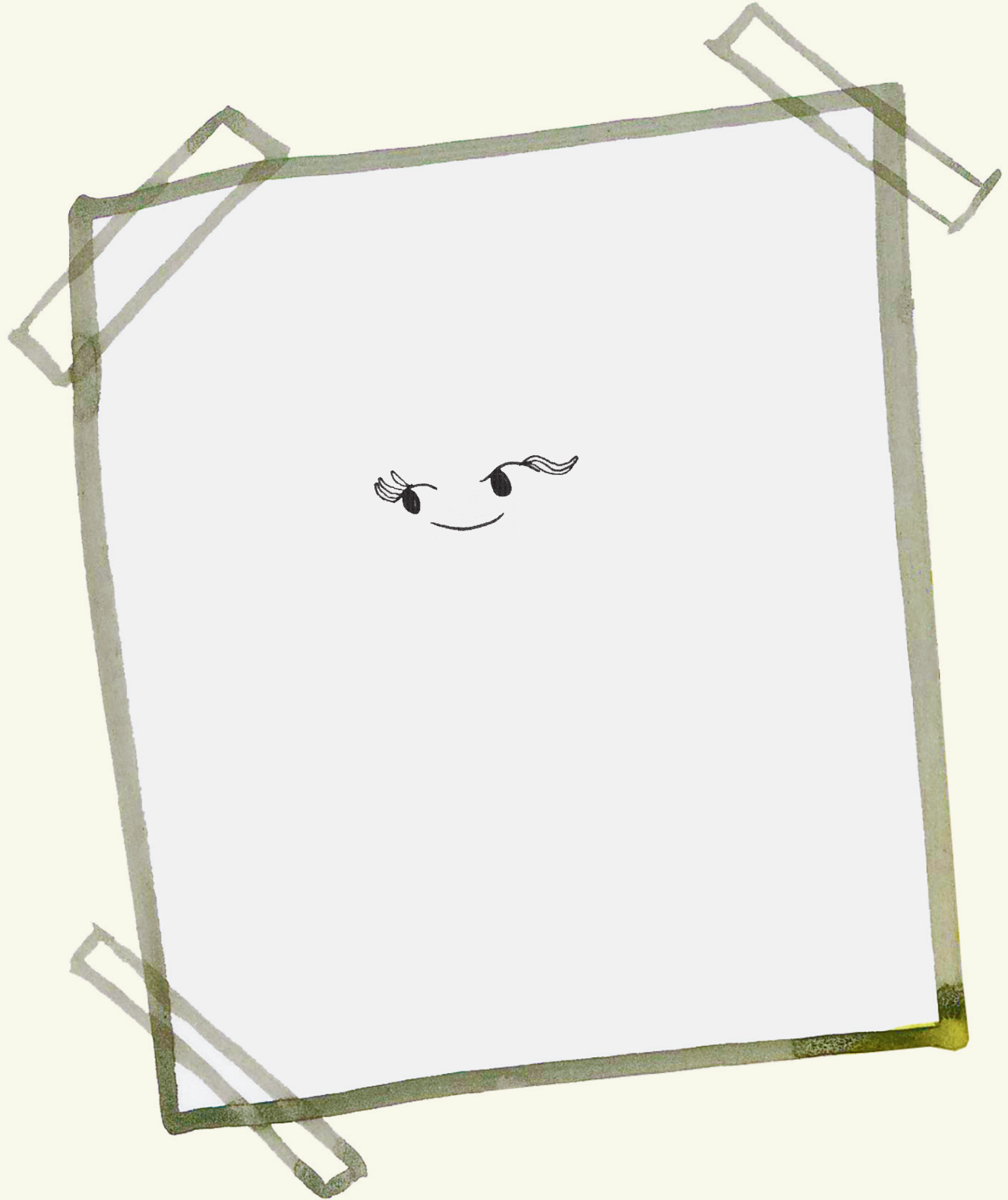


ESMÉ SHAPIRO

ESMÉ SHAPIRO grew up in Laurel Canyon, California, and Ontario, Canada. Currently she and her dog, Chebini Brown, split their time between Brooklyn and New York's Hudson Valley. A graduate of the Rhode Island School of Design, Esmé is a past recipient of both the Nancy Lee Rhodes Roberts Scholarship and the SILA West 53 Gold Award-Phillip Hayes Scholarship. She has previously written and illustrated *Ooko*, which was nominated for a Governor General's Literary Award in 2016, and has illustrated *Yak and Dove* by Kyo Maclear and *Eliza: The Story of Elizabeth Schuyler Hamilton* by Margaret McNamara. She has exhibited at the Society of Illustrators, and her work has been featured in *Taproot* and *Plansponsor* magazines. Connect with her online at esmeshapiroillustration.com and on Twitter and Instagram @esmeshapiro.

Oh no, something is missing on
Alma's plumpooshkie butterfly!

Draw the plumpooshkie's wings and hair using your favorite colors.



Circle TRUE or FALSE after each statement.



Alma ate two butter
breakfast tulips.

TRUE / FALSE



Alma braided the trees.

TRUE / FALSE

Alma cut the grass.

TRUE / FALSE



Alma combed the roof.

TRUE / FALSE

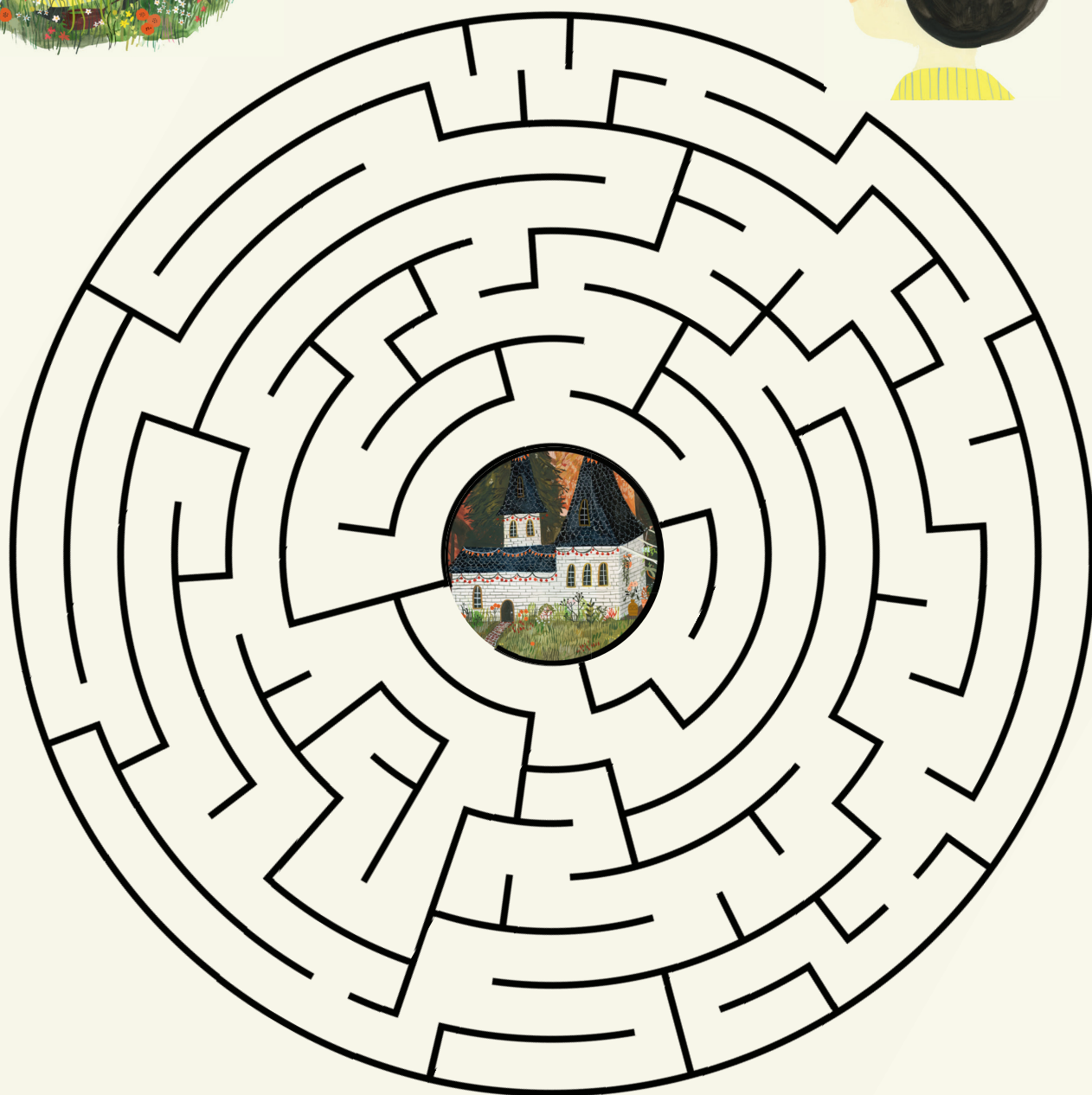


Alma drank the water
from the fountain.

TRUE / FALSE

Alma meets a beast who is terribly,
tremendously, *STUPENDOUSLY* lost.

Help Mala find her way home.



Color in the magical world of Alma and draw
the wings for her plumpooshkie butterfly!



Draw your own magical world for
Alma and Mala to play in!

